

BILBAO SCHOOL OF ENGINEERING

University of the Basque Country, Spain



Universidad
del País Vasco

Euskal Herriko
Unibertsitatea

BILBAO
SCHOOL OF
ENGINEERING
UNIVERSITY
OF THE BASQUE
COUNTRY



2025/26 EDITION

General Information

Contact information

Incoming Students

How to Apply

Grading System

INFORMATION SHEET



CONTACT INFORMATION

Vice Dean of International Relations:

Dr. Saioa Herrero - saioa.herrero@ehu.es

International Officer: Ms. Cecilia Fernández –
ingenieria.internacional@ehu.es

Institutional agreements, Staff mobility:
ingenieria.internacional@ehu.es

Incoming Students: incoming.eib@ehu.es

Outgoing students: outgoing.eib@ehu.es

SICUE students: sicue.eib@ehu.es

GENERAL INFORMATION

Location: Bilbao

Campus: Campus of Biscay

Erasmus Code: E BILBAO01

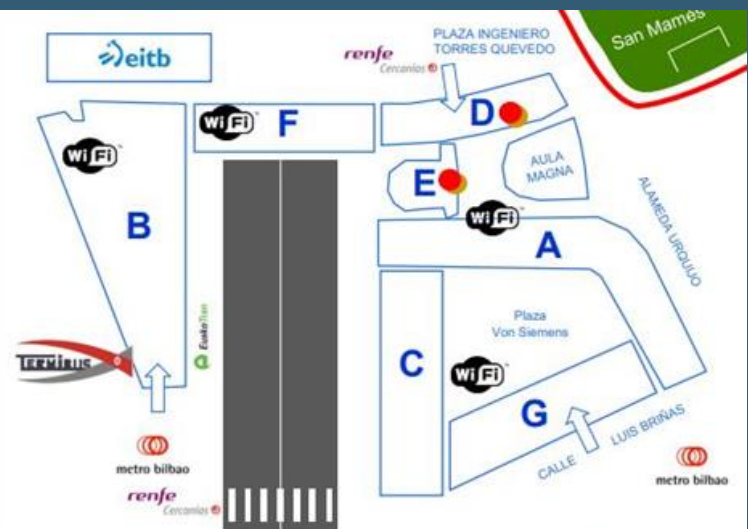
Full Charter: 29640-LA-1-2014-1-ES-E4AKA1-ECHE

PIC: 999865234

OID: E10208839

Web Page: [Bilbao School of Engineering](#)

Instagram: [@bilbaoschoolengineering_inter](#)

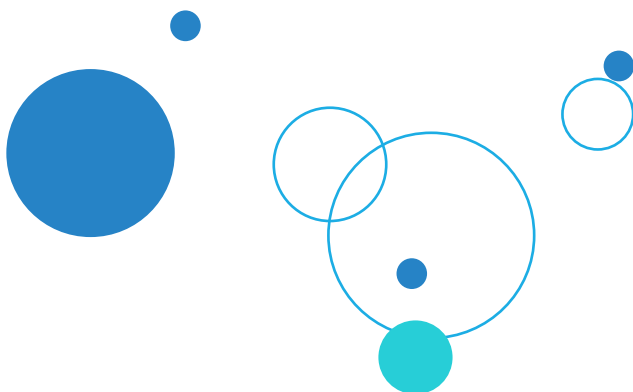


ADDRESS

Office of International Relations
Bilbao School of Engineering
Plaza Ingeniero Torres Quevedo 1, 48013 Bilbao
Spain

PHONE NUMBER

+34 94 601 82 28





INCOMING STUDENTS

LANGUAGE REQUIREMENTS

B2 of language proficiency in **Spanish or English**: level of the Common European Framework of Reference for Languages – CEFR.

We accept the following certification:

- Internationally recognized language certificates such as TOEFL, CAMBRIDGE, IELTS, etc.
- Confirmation issued by home university in regards to student's language skills at the required level (B2), using our language form.

ECTS CREDITS

One semester = 30 ECTS credits.

Full academic year = 60 ECTS credits.

ADDITIONAL REQUIREMENTS

Exchange students are expected to take a minimum workload of 20 ECTS per semester. At least 50% of those credits should correspond to courses offered by Bilbao School of Engineering

COURSES

Lists of the courses offered to exchange students are available on our website

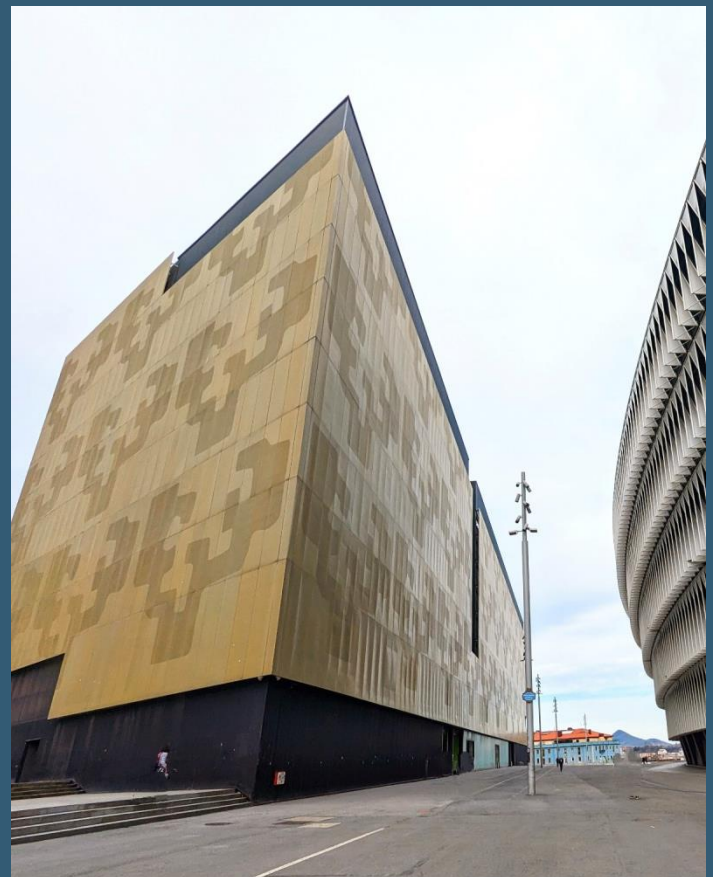
VISA

Students needing a VISA must obtain it by their own means, using the acceptance letter sent by our university.

Further assistance: info.welcomecentre@ehu.eu

ACCOMMODATION

info.welcomecentre@ehu.eu and more information in this [link](#).



HOW TO APPLY

MOBILITY FOR STUDIES

Step 1. Nomination

We send our partner universities an email with the link to our nomination form.

- Fall semester: 1st April - 31st May
- Spring semester: 15th September - 31st October

Step 2. Online application

We contact the nominated students and provide them with the necessary information to apply online before:

- Fall semester: 9th June
- Spring semester: 10th November

For further information, see our [website](#).

VERY IMPORTANT. Insurance:

Students must contact the *Welcome Centre* of the University of the Basque Country (info.welcomecentre@ehu.eus) to take out their medical and travel assistance insurance (compulsory), and send a copy to incoming.eib@ehu.eus two weeks before arriving in Bilbao.

MOBILITY FOR TRAINEESHIPS **(only EU citizens)**

Home universities send nominations and documents to ingenieria.internacional@ehu.eus before:

- 1st April for traineeships between May and August
- 1st July for traineeships between September and December
- 1st December for traineeships between January and April

VERY IMPORTANT. Insurance:

Students must contact the *Welcome Centre* of the University of the Basque Country (info.welcomecentre@ehu.eus) to take out their medical and travel assistance insurance (compulsory), and send a copy to incoming.eib@ehu.eus two weeks before arriving in Bilbao.

They must also send a copy of their mandatory civil liability insurance. Students will not be able to do their internship without this insurance.

GRADING SYSTEM

ECTS Grade	Local grade	Definition
A	9-10	Excellent
B	8-8.9	Very Good
C	7-7.9	Good
D	6-6.9	Satisfactory
E/PASS	5-5.9	Sufficient
FX	4-4.9	Fail
F	0-3.9	Fail
NOT TAKEN	NP	Not taken