



***“FROM CAMPUS TO CAMPUS:
SHARING MY UNIVERSITY JOURNEY”***

ANNA AMIGO PASTORE

UNA

CONTENT



PARAGUAY



- 7.000.000
- 406.792 KM2
- CAPITAL: ASUNCIÓN
- CURRENCY: GUARANI
- LANGUAGES: SPANISH/GUARANI









YACYRETÁ

Located on the Paraná River, on the border between Argentina and Paraguay.



Installed capacity of 3,100 MW.

Construction began in 1983, and the plant started operating in 1994.



ITAIPU

The construction of Itaipú began in 1975, and the plant started operating in 1984.

Located on the Paraná River, on the border between Brazil and Paraguay.

With an installed capacity of 14,000 megawatts (MW), it was for a long time the largest hydroelectric plant in the world in terms of installed capacity.

Supplies 75% of the electricity consumed in Paraguay.



NATIONAL UNIVERSITY OF ASUNCIÓN

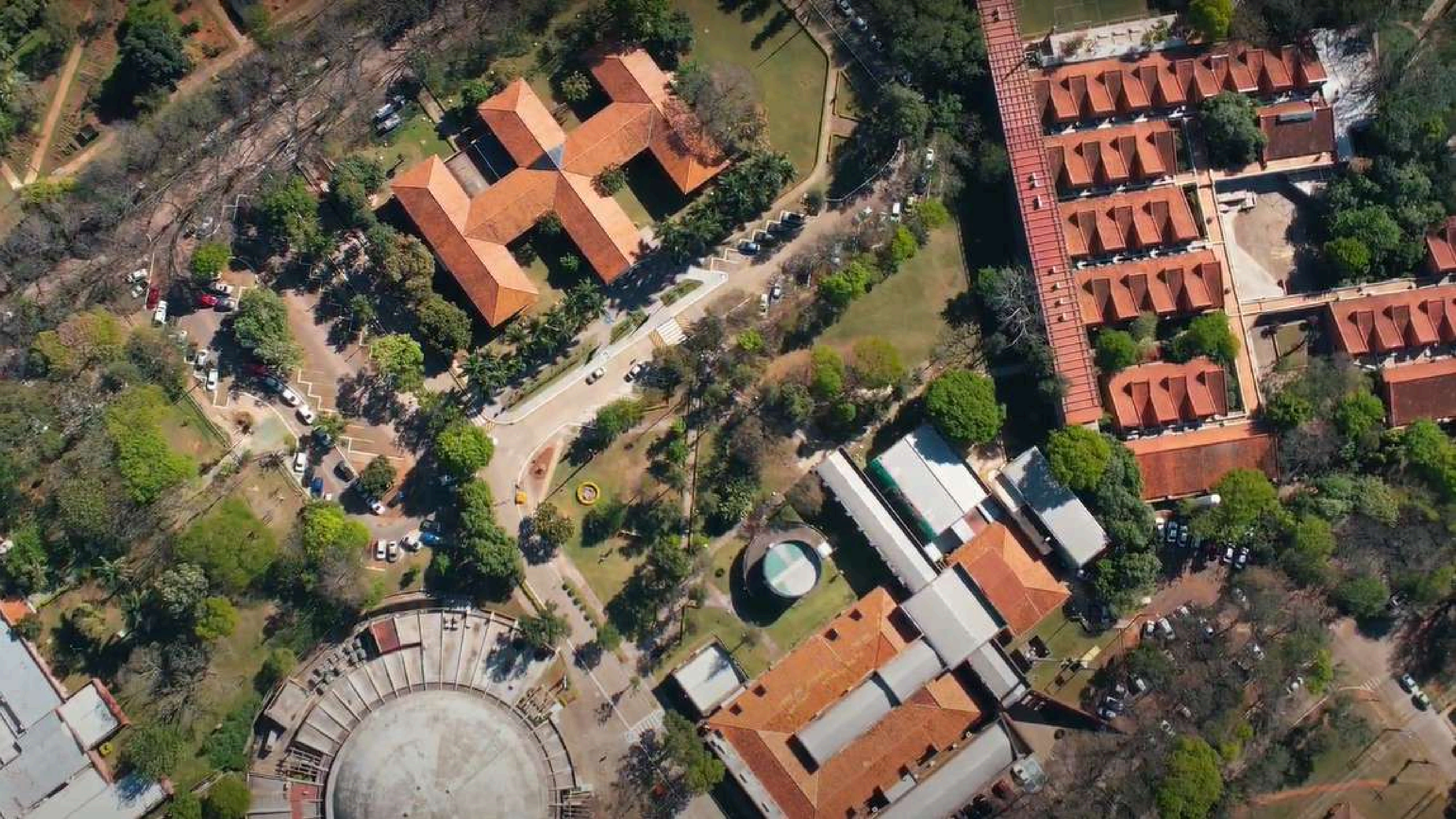
Public University

Founded in 1889.

First University (Paraguay)







Campus UNA, San Lorenzo, Paraguay

Imagen del 29/01/2012

Legend

- Arroyo San Lorenzo
- Limite del campus UNA
- Puntos de muestreo



Google earth

Image © 2018 DigitalGlobe

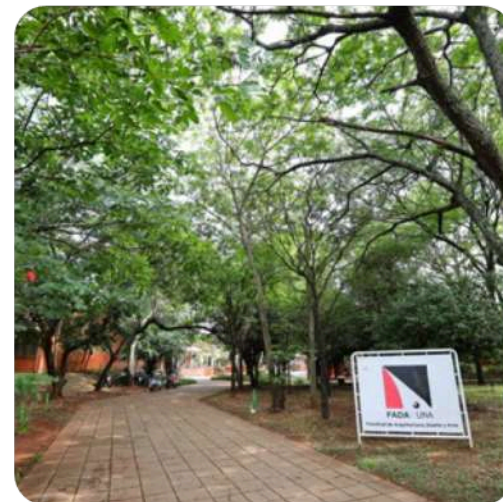
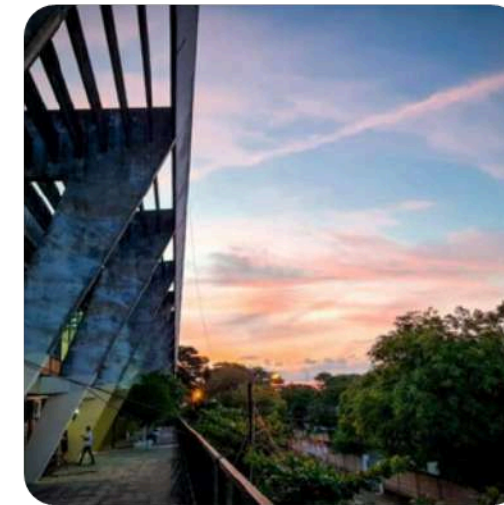
2000 m

+ 55.000 students

14 faculties

78 undergraduate programs

210 graduate programs



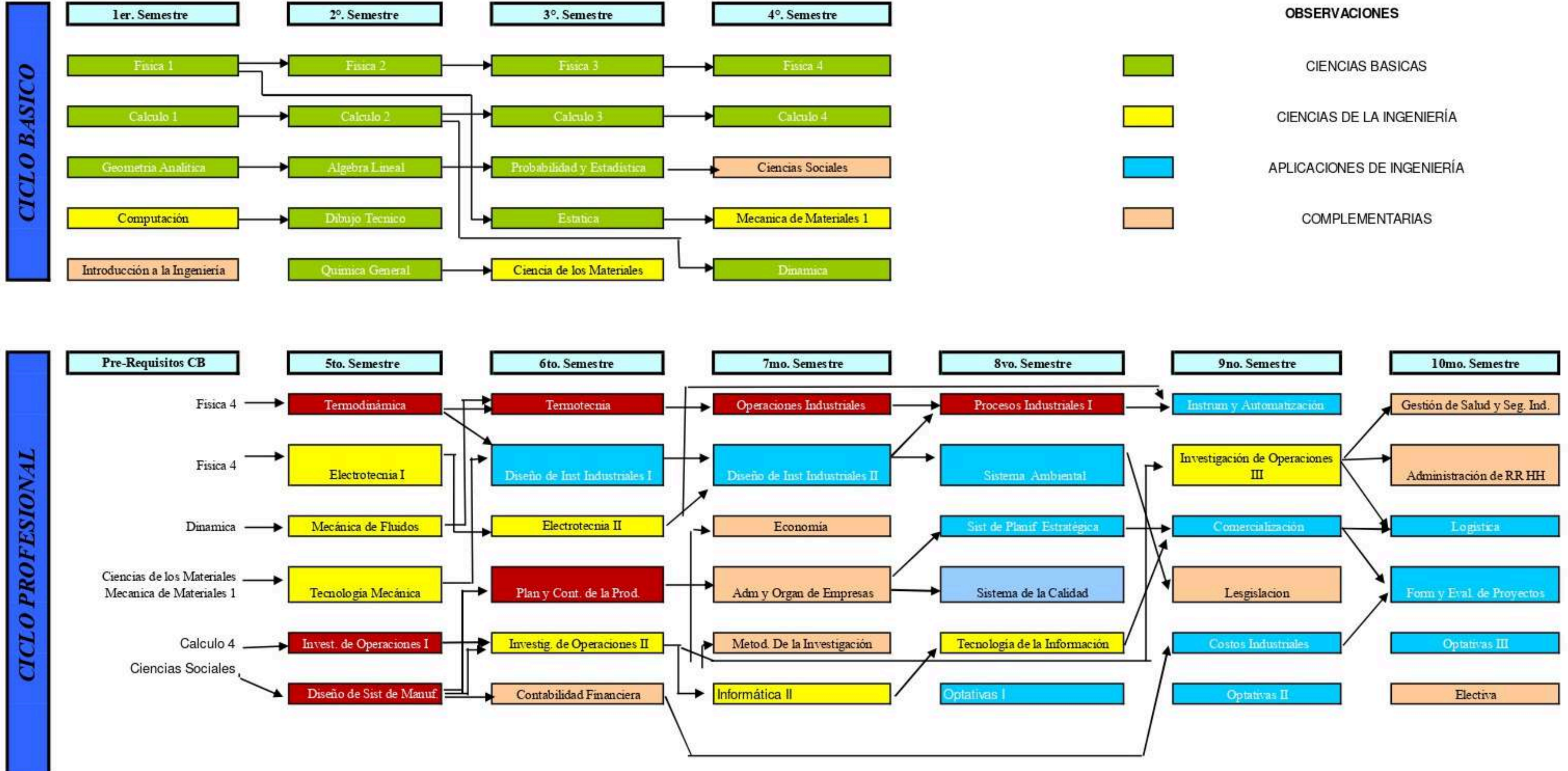
FACULTAD DE INGENIERÍA

7 undergraduate programs:

- *Civil Engineering*
- *Industrial Engineering*
- *Electromechanical Engineering*
- *Electronic Engineering*
- *Geographic and Environmental Engineering*
- *Mechanical Engineering*
- *Mechatronic Engineering*



Carrera de Ingeniería Industrial





SITE VISITS



THANK YOU!